

Brass Couplings

**BRASS COMPRESSION COUPLING
3"-LENGTH**



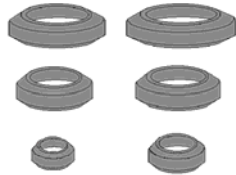
part no.	description	min	carton	price
46331	3/8" 1/2"	12	120	5.80
46332	1/2" 3/4"	12	120	7.38
46333	3/4" 1"	6	72	10.52
46334	1" 1 1/4"	6	60	13.44
46335	1 1/4" 1 1/2"	4	48	18.00
46336	1 1/2"	4	36	21.50
46337	2"	4	36	23.71

**BRASS COMPRESSION COUPLING
5"-LENGTH**



part no.	Description	min	carton	price
46351	3/8" 1/2"	12	120	8.00
46352	1/2" 3/4"	12	120	10.33
46353	3/4" 1"	6	60	15.55
46354	1" 1 1/4"	6	60	19.18
46355	1 1/4" 1 1/2"	4	54	25.08
46356	1 1/2"	4	36	27.00
46357	2"	4	24	38.00

**WASHERS FOR COMPRESSION
COUPLINGS**



part no.	description	min	carton	price
46341	3/8"	10	10	.45
46342	1/2"	10	10	.61
46343	3/4"	10	10	.77
46344	1"	10	10	1.09
46345	1 1/4"	10	10	1.33
46346	1 1/2"	10	10	1.72
46347	2"	10	10	2.15

GAVALNIZED HANGER STRAPS

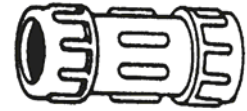
Galvanized metal 10 feet coils.



part no.	description	min	carton	price
50507	24 Guage	10	200	4.33
P50507	Retail package in clam shells			5.83

PVC Couplings

PVC COMPRESSION COUPLING



part no.	description	min	carton	price
46102	1/2"	10	240	2.83
46103	3/4"	10	120	3.40
46104	1"	10	120	4.43
46105	1 1/4"	3	72	6.30
46106	1 1/2"	3	48	7.78
46107	2"	3	48	9.83
46108	2 1/2"	3	20	15.75
46109	3"	2	12	20.00

PVC COMPRESSION TEE

Compression X Compression X Female IPS Thread



part no.	description	min	carton	price
46202	1/2"	10	100	4.00
46203	3/4"	10	100	4.59
46204	1"	10	100	6.68
46205	1 1/4"	8	50	8.78
46206	1 1/2"	6	50	10.87
46207	2"	4	20	12.93

DIELECTRIC UNIONS

Female IPS Threaded Steel X Solder End Copper.



part no.	description	min	carton	price
46402	1/2"	12	144	8.25
46403	3/4"	12	144	8.78
46404	1"	12	120	11.70
46405	1 1/4"	6	48	18.90
46406	1 1/2"	6	48	27.98
46407	2"	6	24	38.85

FAUCETS

FAUCET REPAIR

SHOWER & TUB

SINKS

TOILET REPAIR

VALVES

PIPE REPAIR & FITTINGS

PLUMBING SPECIALTY

TUBULAR

BATHROOM FIXTURE

PLUMBING TOOLS

DISPLAY STUFF

Couplings

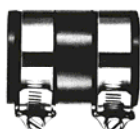
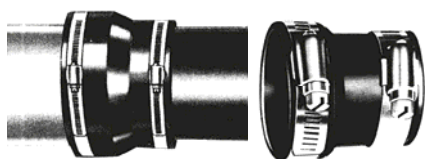
NO HUB PIPE COUPLING

Stainless Steel Clamps



part no.	description	min	carton	price
46706	1 1/2"	1	100	4.93
46707	2"	1	100	5.33
46709	3"	1	100	6.40
46710	4"	1	100	7.48

RUBBER FLEX COUPLINGS



part no.	description	carton	price
47105	1/4" x 1/4" Pipe x pipe	100	3.25
47106	1/2" x 1/2" Pipe x pipe	100	3.33
47107	2" x 2" Pipe x pipe	100	3.60
47109	3" x 3" Pipe x pipe	60	4.60
47110	4" x 4" Pipe x pipe	50	5.88
47111	1/2" x 1/4" Pipe x pipe	100	3.05
47121	2" x 1/2" Pipe x pipe	100	3.78
47132	3" x 2" Pipe x pipe	60	4.43
47141	4" x 1/2" Pipe x pipe	50	17.00
47142	4" x 2" Pipe x pipe	50	15.62
47143	4" x 3" Pipe x pipe	50	16.20
47144	4" x 4" Clay x clay	30	8.93
47166	1/2" x 1/2" Pipe x tubular	100	5.50
47176	2" x 1/2" Pipe x tubular	100	7.32
47181	1/2" x 1/2" Tubular x tubular	100	4.68

JIM CAP

Galvanized Steel Flanges
with Molded Rubber Gaskets.



part no.	description	min	carton	price
47006	1 1/2"	10	50	2.90
47007	2"	10	50	3.48
47009	3"	6	50	4.72
47010	4"	6	50	5.60

Couplings

TEST PLUG

Galvanized Steel Flanges
with Molded Rubber Gaskets.



part no.	description	min	carton	price
46806	1 1/2"	10	100	2.48
46807	2"	10	100	2.90
46809	3"	5	50	4.27
46810	4"	5	50	5.60

HOSE CLAMPS

Stainless Steel Bend,
Chrome Plated Zinc Housing.



part no.	description	min	carton	price
46724	#4 7/32" to 5/8"	100	2000	.45
46726	#6 1/2" to 3/4"	100	2000	.50
46728	#8 1/2" to 7/8"	100	2000	.50
46730	#10 9/16" to 1-1/16"	100	1000	.50
46732	#12 11/16" to 1-1/4"	100	1000	.50
46736	#16 13/16" to 1-1/2"	100	1000	.52
46740	#20 13/16" to 1-3/4"	100	1000	.64
46744	#24 1-1/16" to 2"	100	1000	.70
46748	#28 1-5/16" to 2-1/4"	100	1000	.70
46752	#32 1-9/16" to 2-1/2"	100	1000	.73
46756	#36 1-13/16" to 2-3/4"	100	500	.76
46760	#40 2-1/16" to 3"	50	500	.80
46768	#48 2-9/16" to 3-1/2"	50	500	1.15
46780	#60 3-5/16" to 4-1/4"	50	500	1.33

FLOOR & CEILING SPLIT FLANGES

Chrome plated steel. Sure grip.



part no.	description	min	carton	price
43012	1/2" Copper	12	576	.85
43013	3/4" Copper	12	576	.85
43002	1/2" Iron pipe	12	576	.85
43003	3/4" Iron pipe	12	576	.98
43004	1" Iron pipe	12	576	.98
43005	1/4" Iron pipe	12	576	.98
43006	1/2" Iron pipe	12	576	.98
43007	2" Iron pipe	12	576	1.17

Couplings

ESCUTCHEONS

Chrome plated shallow flanges.



part no.	description	min	carton	price
43041	1/2" Copper	20	2000	.35
43042	3/4" Copper	20	2000	.35
43032	1/2" Iron pipe	20	2000	.35
43033	3/4" Iron pipe	20	2000	.38
43034	1" Iron pipe	20	2000	.70
43035	1 1/4" Iron pipe	20	1000	.70
43036	1 1/2" Iron pipe	20	1000	.80
43037	2" Iron pipe	20	1000	1.10

Copper Fittings

COPPER FITTINGS - 90° ELBOW



part no.	description	box	ctn	price
71012	1/2"	50	500	0.75
71013	3/4"	25	250	1.85
71014	1"	10	100	3.375

COPPER FITTINGS - 45° ELBOW



part no.	description	box	ctn	price
71032	1/2"	50	500	0.88
71033	3/4"	25	250	2.15
71034	1"	10	100	3.95

COPPER FITTINGS - 90° STREET ELBOW



part no.	description	box	ctn	price
71052	1/2"	50	500	0.95
71053	3/4"	25	250	1.80
71054	1"	10	100	3.15

Copper Fittings

COPPER FITTINGS - COUPLING



part no.	description	box	ctn	price
71142	1/2"	50	1000	0.35
71143	3/4"	25	350	0.80
71144	1"	10	100	1.15

COPPER FITTINGS - 45° STREET ELBOW



part no.	description	box	ctn	price
71072	1/2"	50	500	0.95
71073	3/4"	25	250	2.28
71074	1"	10	100	4.28

COPPER FITTINGS - TEE



part no.	description	box	ctn	price
71092	1/2"	50	400	1.45
71093	3/4"	25	150	3.63
71094	1"	10	60	5.73
71097	3/4"X3/4"X1/2"	25	200	3.43

COPPER FITTINGS - STRAP



part no.	description	box	ctn	price
71122	1/2"	100	2000	0.35
71123	3/4"	100	1000	0.48
71124	1"	100	1000	0.65

COPPER FITTINGS - MALE ADAPTER



part no.	description	box	ctn	price
71162	1/2"	50	500	1.75
71163	3/4"	25	250	3.15
71164	1"	10	100	5.28

FAUCETS

FAUCET REPAIR

SHOWER & TUB

SINKS

TOILET REPAIR

VALVES

PIPE REPAIR & FITTINGS

PLUMBING SPECIALTY

TUBULAR

BATHROOM FIXTURE

PLUMBING TOOLS

DISPLAY STUFF

Copper Fittings

COPPER FITTINGS - CAP



part no.	description	box	ctn	price
71182	1/2"	100	1000	0.48
71183	3/4"	50	500	0.75
71184	1"	25	250	1.03

Brass Fittings

BRASS NIPPLE

1/2" Brass Nipple. Male Threaded



ROUGH BRASS

part no.	description	min	carton	price
51221	2"	10	100	2.83
51222	3"	10	100	4.08
51223	4"	10	100	5.38
51224	6"	10	100	6.63
51225	8"	10	100	7.88

CHROME PLATED

51231	2"	10	100	3.75
51232	3"	10	100	5.43
51233	4"	10	100	7.03
51234	6"	10	100	8.63
51235	8"	10	100	9.98

BRASS NIPPLE

3/4" Brass Nipple,
Male Threaded



part no.	description	box	ctn	price
71332	2"	50		4.08
71333	3"	25		5.93
71334	4"	15		7.78
71335	5"	10		9.60
71336	6"	10		11.43
71338	8"	10		22.80

Brass Fittings

BRASS FITTINGS - 90° ELBOW

Female Threaded X Female Threaded



part no.	description	box	ctn	price
71702	1/2"	50	200	5.33
71703	3/4"	30	90	7.18
71704	1"	20	60	11.08

BRASS FITTINGS - 45° ELBOW

Female Threaded X Female Threaded



part no.	description	box	ctn	price
71722	1/2"	50	200	3.63
71723	3/4"	40	120	5.13
71724	1"	20	60	8.48

BRASS FITTINGS - UNION

Female Threaded X Female Threaded



part no.	description	box	ctn	price
71752	1/2"	25	100	5.33
71753	3/4"	25	75	7.18
71754	1"	20	40	11.08

DROP EAR 90° ELBOWS

Brass Construction.
1/2" FIP X 1/2" C X C



part no.	description	min	carton	price
70122		10	200	5.40

Brass Fittings

BRASS FITTINGS - ELBOW 90° STREET

Female Threaded X Male Threaded



part no.	description	box	ctn	price
71712	1/2"	60	180	4.65
71713	3/4"	30	90	6.60
71714	1"	30	60	10.83

BRASS FITTINGS - TEE

Female Threaded



part no.	description	box	ctn	price
71742	1/2"	40	120	6.13
71743	3/4"	35	70	8.80
71744	1"	20	40	15.68

BRASS FITTINGS - COUPLING



part no.	description	box	ctn	price
71732	1/2"	60	240	4.40
71733	3/4"	50	150	5.80
71734	1"	25	75	8.80

BRASS FITTINGS - PLUG



part no.	description	box	ctn	price
71762	1/2"	40	480	10.80
71763	3/4"	25	300	14.98
71764	1"	40	160	19.83

Strainers

STAINLESS MESH STRAINERS

Mesh sink drain traps, catch even hairs. Size is shown as "Outside Diameter X Inside Diameter X Depth".



51994 51993 51991 51990

part no.	description	min	price
51990	For lavatory 2.09"x1.10"x0.59"	10	1.52
51991	Bathtub & laundry 2.75"x1.50"x0.79"	10	1.71
51992	Shampoo bowl 3.38"x3.06"x1.58"	10	2.05
51993	Shower 3.62"x1.89"x1.18"	10	2.10
51994	Kitchen 4.33"x3.06"x1.58"	10	2.13
P51990	Retail package on cards		2.18
P51991	Retail package on cards		2.45
P51992	Retail package on cards		2.76
P51993	Retail package on cards		2.90
P51994	Retail package on cards		3.03

FLOOR STAINLESS MESH STRAINERS

Mesh sink drain traps, catch even hairs.



part no.	description	min	price
51995	11"x11"x1.96"	10	35.83

DRAIN GUARDS

Polished Aluminum, 3-1/16" Diameter with Clip.



part no.	description	min.	carton	price
52017		5	200	1.40
P52017	Retail package on cards		2.90	

DRAIN GUARD - HAIR SNARE

Catch hair from sticking drains.



part no.	description	box	carton	price
52025	White	10	250	0.98
P52025	Retail package on cards		2.23	

FAUCETS

FAUCET REPAIR

SHOWER & TUB

SINKS

TOILET REPAIR

VALVES

PIPE REPAIR & FITTINGS

PLUMBING SPECIALTY

TUBULAR

BATHROOM FIXTURE

PLUMBING TOOLS

DISPLAY STUFF